



 **dri-**
design[®]
A Kingspan Group Company

The
env[®]
Collection



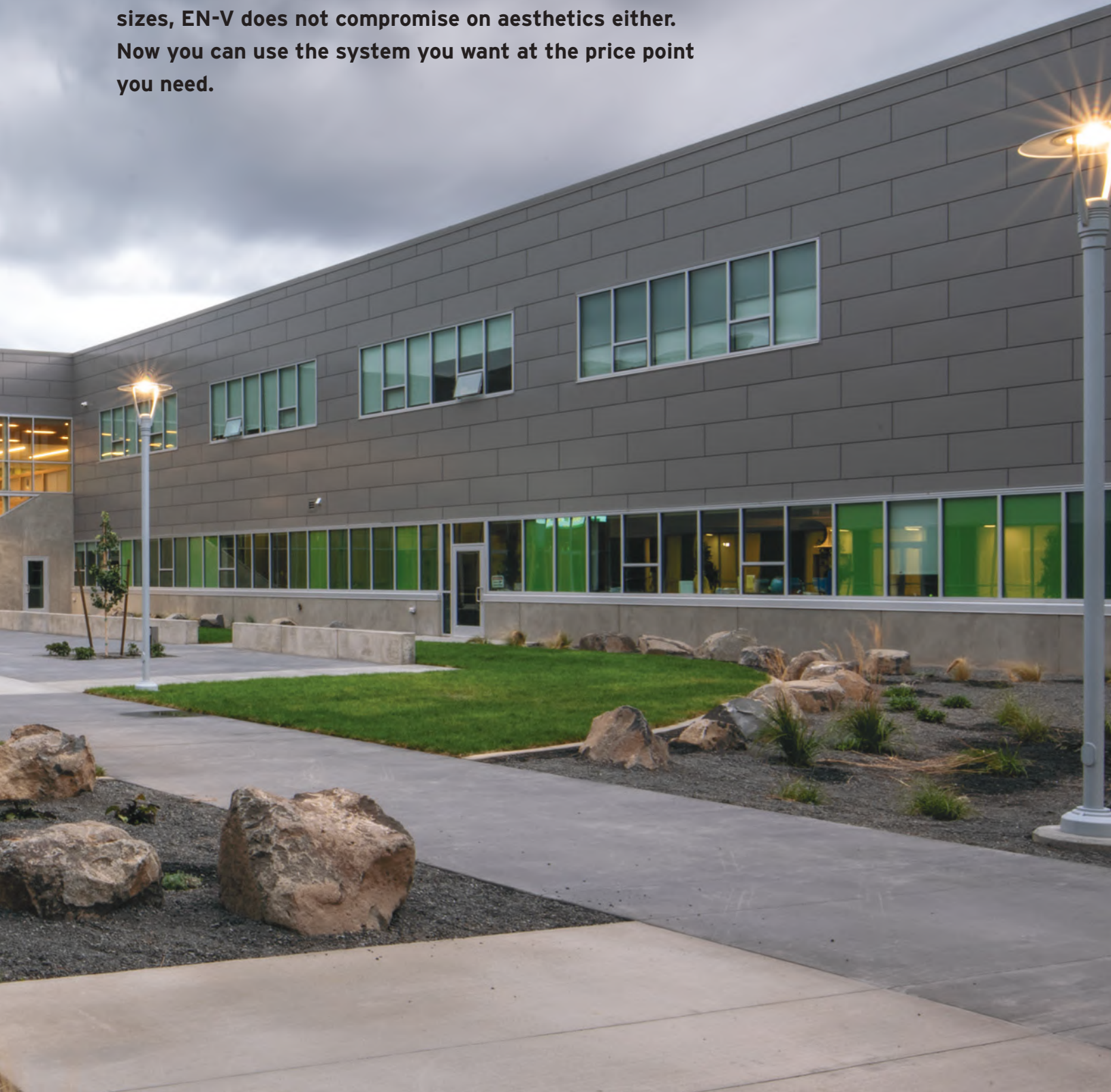
Quincy High School

Quincy, WA
NAC Architecture
Material: A80 Series

Today, value engineering has fallen far from its origins, with products being chosen and changed out simply because they are cheaper, many times sacrificing performance and longevity.

With the EN-V Collection, we aim to restore the true meaning of value. EN-V is Dri-Design price-optimized by taking advantage of manufacturing and material efficiencies to provide significant cost savings without sacrificing performance or aesthetics.

Available in an extensive palette of colors, materials and sizes, EN-V does not compromise on aesthetics either. Now you can use the system you want at the price point you need.



University of Montana - Missoula College

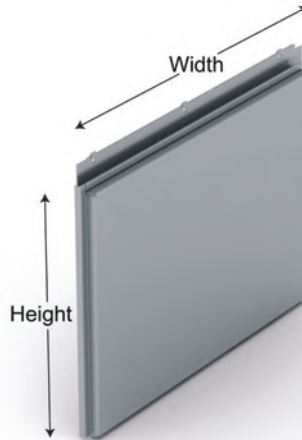
Missoula, MT
StudioForma Architects
Material: A80 Series





EN-V A80 Series (.080" Aluminum)

The A80 Series is the flagship of the EN-V Collection. Manufactured from .080" aluminum and post-painted in a fluoropolymer finish, this system provides the most flexibility in size and finish. Highly tested for structural and rainscreen performance, the A80 system is where form, function, and value intersect.



Available Sizes

*dimensions are center line to center line.

Width x Height	Width x Height	Width x Height	Width x Height	Width x Height
36" x 36"	24" x 48"	72" x 24"	18" x 48"	72" x 18"
72" x 22"	48" x 22"	96" x 22"	30" x 30"	96" x 18"
120" x 22"	60" x 22"	96" x 24"	48" x 24"	96" x 20"
	60" x 24"	120" x 20"	60" x 20"	120" x 18"
	72" x 20"	120" x 24"		

East Park Community Center

Nashville, TN
Everton Oglesby Architects
Material: A50 Series

EN-V A50 Series (.050" Aluminum)

Utilizing .050" pre-painted aluminum, the EN-V A50 Series brings a whole new level of cost efficiency to an architectural metal wall panel. By selecting optimized sizes manufactured from lighter gauge aluminum, we can reduce raw material costs and bring savings without compromising performance and longevity. With 28 standard colors to choose from, and a 20 year finish warranty, the A50 series raises the bar for value in aluminum rainscreens.

Available Sizes

*dimensions are center line to center line.

Width x Height
48" x 16"
60" x 16"
72" x 16"
96" x 16"
120" x 16"









EN-V Z Series (1MM Zinc)

Zinc is a beautiful natural material with incredible longevity when used in a single-skin façade application. However, people often view zinc as an expensive product that doesn't fit the budget. The EN-V Z Series aims to change this perception. Using 1mm gauge zinc material in both Quartz gray and Anthra black, we found the most optimal sizes for material use and manufacturing, allowing us to provide an architectural zinc panel at an accessible price.

Available Colors

Anthra



Quartz



Available Sizes

*dimensions are center line to center line.

Z Anthra

Width x Height
48" x 24"
60" x 24"
72" x 24"

Z Quartz

Width x Height
48" x 16"
60" x 16"
72" x 16"
48" x 24"
60" x 24"
72" x 24"

IWCC Arts Center

Council Bluffs, IA
HDR Inc.
Material: WS Series

EN-V WS Series (18 Gauge Weathering Steel)

Weathering steel has recently had a renaissance in architecture, and it's easy to see why when you observe the depth of the natural finish that forms on this material. The WS Series takes the EN-V optimization concept to find the most significant value and combines it with a weathering steel substrate. We honed in on 15 of the most efficient sizes in weathering steel to provide a standard offering of architectural panels at a value price point.

Available Sizes

*dimensions are center line to center line.

Width x Height		
48" x 16"	72" x 22"	120" x 24"
60" x 16"	48" x 24"	30" x 30"
72" x 16"	60" x 24"	36" x 36"
96" x 16"	72" x 24"	24" x 48"
120" x 16"	96" x 24"	18" x 48"





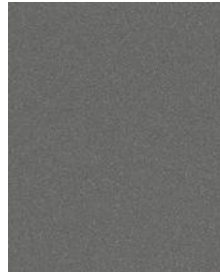


EN-V G Series (Galvanized Steel)

The concept of the EN-V Collection is to provide the best value for a fully tested architectural rainscreen system. We also want to offer a wide range of finish and material options so that value doesn't have to equal boring. The EN-V G Series uses a brand new ultra-matte finish on a galvalume substrate to create a product that has a unique and beautiful finish and the lowest price of any EN-V panel we offer. We offer four standard colors with custom colors available, and they come with a 20-year finish warranty standard.

Standard Colors

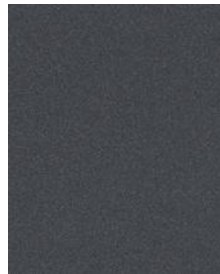
Shale



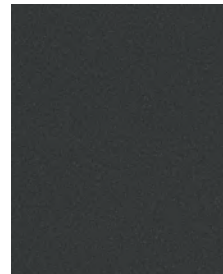
Graphite



Basalt



Carbon



Available Sizes

*dimensions are center line to center line.

Width x Height	
18" x 48"	72" x 16"
24" x 48"	72" x 18"
30" x 30"	48" x 24"
48" x 16"	60" x 24"
60" x 16"	72" x 24"



Engineered for Value, Powered by Dri-Design

(616) 355-2970

dri-design.com/env-collection

P.O. Box 1286 | Holland, Michigan 49422

