



12480 Superior Ct., Suite #1  
 Holland, MI 49424  
 616-355-2970  
 dri-design.com/env-collection

Date:

## EN-V - G Series Price Request

Customer Information		Project Information	
Company:		Project Name :	
Street Address:		City:	
City:		State:	
State:		Zip Code:	
Zip Code:			
Contact:			
email address:			
Phone #:			

### Color Choices

<b>Shale</b>	<b>Carbon</b>
<b>Graphite</b>	<b>Basalt</b>

\*\* 22ga Material Thickness

\*\* 22ga Material Thickness

### Panel Size / Quantity



Quantity	Size	
	W	H
	18"	48"
	24"	48"
	30"	30"
	48"	16"
	60"	16"
	72"	16"
	72"	18"
	48"	24"
	60"	24"
	72"	24"

NOTE: All dimensions for flat panels are centerline to centerline

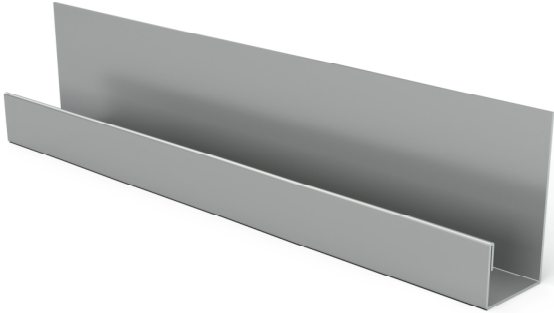
EN-V panels have a 1/2" horizontal joint and a 5/8" vertical joint

**\*\* See Next Sheet for Trims and Flat Sheets \*\***

Date:

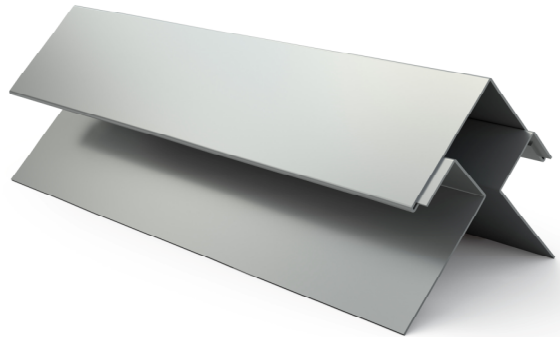
## Trims / Flat Sheets & Accessories

Large J Channel Trim (22ga)



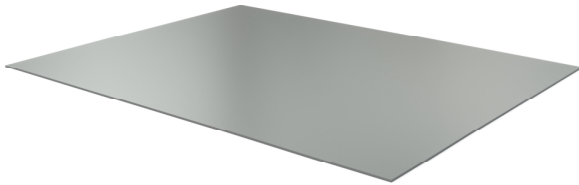
Quantity: |

Corner Trim (22ga)



Quantity: |

48" x 120" x 22ga Flat Sheet - Painted One Side



Quantity: |

**Please Provide profiles On EN-V Trim  
Order Form**

Quantity: |